

JUNIOR LIVESTOCK

POULTRY

FORMS & FEES DUE By: Tuesday, July 6, - 6pm
Entries In Place: Tues., July 27, 9:30 am – 11:30 am
Entries Judged: See Livestock Schedule
Entries Released: Sun., Aug 1, - 6 pm
Any birds left after 6 pm will not be released until Mon at 8 am.
Livestock Release form is required to remove exhibit from the fairgrounds.



A. P. A. Sanctioned
AMERICAN SYSTEM OF JUDGING

Local Classes Open to Members of 4-H & Grange Clubs, FFA Chapters, & Independents of Amador & Calaveras Counties

Standard Bred Chickens without Production Records

ALL POULTRY MEAT PENS, WITH THE EXCEPTION OF THE CHAMPION & RESERVE CHAMPION SHALL BE EXCUSED AT THE CONCLUSION OF THE POULTRY SHOW.

JUDGING RULES: Rules, definitions and judging procedure as prescribed in the latest edition of the Official Show Rules and Standard of Perfections of the American Poultry Association, Inc., shall apply to all district and county fair poultry shows, except in such instances where they are in conflict with rules and regulations prescribed by the Department of Food & Agriculture. Birds will be judged in the proper division and class for breed, variety, age and sex only. If no class is offered no award may be made. **ALL ENTRIES ARE FINAL, NO SUBSTITUTIONS.** Disqualified birds and those absent at the time of judging do not count when computing the number of exhibitors in the section. A judge may excuse a bird from competition if it appears to be fatigued or out of condition, but the bird shall be counted as an entry. For all classes of Standard bred chickens, all birds must be identified by leg bands conforming to the entry form on arrival at the show.

HEALTH RULES: refer to State Rules and scorecards for California Fairs. Any bird showing evidence of disease will be immediately removed from the fairgrounds. **HEALTH INSPECTION REQUIRED UPON ARRIVAL. SEE SCHEDULE.** ANY VIOLATION OF STATE OR LOCAL RULES WILL RESULT IN LOSS OF ANY AWARDS. STATE RULES APPLY.

Any birds left in building after 6 PM on Sunday will be locked in until Monday 8 am.

BEST OF SHOW

Award sponsored by Karin Wickstrom

RESERVE BEST OF SHOW

sponsored by Dean Wickstrom Jr.

All breeds judged together - NO CROSS BREEDS

LIMIT: 10 Birds per Exhibitor

Entry Fee: \$.50 per Class

Standard Breeds

Class

- | Class | Age |
|-------------|---------------------------|
| 1. Cockerel | male, under one year |
| 2. Cock | male, one year and over |
| 3. Pullet | female, under one year |
| 4. Hen | female, one year and over |

Large Fowl

- Division 15 - American
- Division 16 - English
- Division 17 - Continental
- Division 18 - Mediterranean
- Division 19 - Asiatic
- Division 20 - All other Standard Breeds

Bantam

- Division 21 - Old English Game
- Division 22 - Modern Game
- Division 23 - Single Comb Clean Legged
- Division 24 - Rose Comb Clean Legged
- Division 25 - Feather Legged
- Division 26 - Any Other Comb Clean Legged

Water Fowl

- Division 27 - Bantam Ducks
- Division 28 - Light Ducks
- Division 29 - Medium Ducks
- Division 30 - Heavy Ducks

MEAT BIRDS



LIMIT: 2 Entries, Total 4 Birds per Exhibitor
Entry Fee: \$.50 per entry per class

Two birds not over 10 weeks. 3½ to 6 lbs.

NO PREMIUMS Offered
OPEN ONLY TO AMADOR COUNTY

Exhibitor names and poultry identification numbers must be submitted by May 23, 2010 to be eligible for the auction.

MEAT BIRDS Continued on next page

MEAT BIRDS Continued

DIVISION 31 – 4-H/GRANGE – PAIR LIVE MEAT BIRDS

4-H/Grange Champion Meat Pen
sponsored by Kamps Propane
Buckle sponsored by OPEN

4-H/Grange Reserve Champion Meat Pen
sponsored by Jim & Bonnie Sallee

Class

5. 4-H & Grange Meat Pens

DIVISION 32 – FFA/GRANGE – PAIR LIVE MEAT BIRDS

FFA/Grange Champion Meat Pen
sponsored by Simmons Landscape
Buckle sponsored by OPEN

FFA/Grange Reserve Champion Meat Pen
sponsored by Bohall Livestock

Class

6. FFA & Grange Meat Pens

**PLEASE DON'T FORGET TO
THANK YOUR SPONSORS!!!**

TURKEYS

FORMS & FEES DUE By: Tuesday, July 6, - 6pm
Entries In Place: Tues., July 27, 9:30 am – 11:30 am
Entries Judged: Thurs., July 29 - 1 pm
Entries Released: Sun., Aug 1 - 6 pm
**Any birds left after 6 pm will not be released until
Mon at 8 am.**
**Livestock Release form is required to remove exhibit
from the fairgrounds.**



AMERICAN SYSTEM OF JUDGING

Local Classes-Open to Members of 4-H & Grange Clubs,
FFA Chapters, & Independents of Amador Co.

***** Walk on show for the Turkeys. *****

Only Champions and Reserve Champions will stay
during the Fair and sell at the Auction.
Exhibitors MUST be able to carry & show
their own Turkey.

Proof of age must be submitted at time of weigh-in.

LIMIT: 1 Entry Per Exhibitor
Entry Fee: \$.50 per entry
NO PREMIUMS Offered – Ribbons Only

DIVISION 33 - 4-H/GRANGE - MARKET TURKEY

4-H/Grange Champion Turkey
sponsored by Jim & Bonnie Sallee
Buckle sponsored by OPEN

4-H/Grange Reserve Champion Turkey
sponsored by Gold Nugget 4-H

Class

7. 4-H/Grange/Independent - Market Turkey
Minimum of 15 lbs, not over 38 lbs and not over
22 weeks

DIVISION 34 – FFA/GRANGE – MARKET TURKEY

FFA/Grange Champion Turkey
sponsored by Joe Lewis
Buckle sponsored by OPEN

FFA/Grange Reserve Champion Turkey
sponsored by Double SS Auction Co. - Seth Seever

Class

8. FFA/Grange/Independent Market Turkey
Minimum of 15 lbs, not over 38 lbs and not over
22 weeks

EGGS

FORMS & FEES DUE BY: Monday July 6, 6 pm
Entries In Place By: Thurs., July 29, by 12 noon
**Entries Judged: Walk on Show following
Poultry showmanship**
Livestock Release is required.
**Any animals in building after 6 pm Sun will not be
released until Monday, Aug. 2 8 am**



AMERICAN SYSTEM OF JUDGING

Open to Members of 4-H & Grange Clubs, FFA Chapters, &
Independents of Amador County

ALL ENTRIES ARE FINAL. NO SUBSTITUTIONS. ANY
VIOLATION OF STATE OR LOCAL RULES WILL RESULT
IN A LOSS OF ANY AWARDS. STATE RULES APPLY.

LIMIT: 2 Entries per exhibitor per class
Entry Fee: \$.50 per entry per class
NO PREMIUMS Offered – Ribbons Only

ALL EGG ENTRIES SHALL BE DELIVERED TO THE
POULTRY BARN, UNLESS FURTHER NOTIFIED
RULES.

A. Entry to consist of 1 dozen (12) chicken eggs in
cartons: ½ dozen, (6) for judging & ½ dozen, (6) for
display.

B. Eggs will be judged on uniformity, shape, size, and
color. The judge reserves the right to break eggs if he
deems it advisable in order to properly judge the
exhibit.

EGGS Continued on next page

EGGS Continued

RULES Continued:

- C. Eggs must be kept refrigerated prior to judging.
- D. Eggs must be laid by exhibitor's bird(s).
- E. NO STORE BOUGHT EGGS ARE ALLOWED.
- F. Disqualification will occur if eggs are store bought.
- G. Eggs will be judged for awards only & will NOT sell at the auction.

BEST OVERALL EGGS

Award sponsored by Frank A's Pizza

BEST OVERALL RESERVE EGGS

Award sponsored by Open

4-H BEST = \$15

Cash Award sponsored by Margaret Sturgeon

4-H RESERVE BEST = \$10

Cash Award sponsored by Margaret Sturgeon

FFA BEST EGGS

sponsored by Open

FFA BEST RESERVE EGGS

sponsored by Open

DIVISION31 – EGGS – WHITE

Class

- 9. 4-H/Grange/Independent EGGS
- 10. FFA/Grange/Independent EGGS

DIVISION 35 – EGGS – BROWN OR TINTS

Class

- 11. 4-H/Grange/Independent EGGS
- 12. FFA/Grange/Independent EGGS

RABBITS

FORMS & FEES DUE BY: Tuesday July 6, 6 pm
Entries In Place By: Wed., July 28, by 8 am
Entries Judged: Walk on Show Wed., July 28, 9 am
Livestock Release is required.
Any animals in building after 6 pm Sun will not be released until Monday, Aug. 2, 8 am



AMERICAN SYSTEM OF JUDGING

Local Classes - Open to Members of 4-H, Grange Clubs, FFA Chapters & Independent Exhibitors of Amador County

Official A.R.B.A Sanctioned Show

PO Box 426 Bloomington, IL 61702

Membership Dues:

- Adult: \$15.00 or \$40.00 for 3 years
- Youth: \$8.00 or \$20.00 for 3 years
- Combo Husband/Wife: \$20.00 or \$50.00 for 3 yrs
- Family: \$20.00 plus \$2.00 per youth or \$50.00 plus \$6.00 per youth for 3 years

RABBIT RULES:

- A. No Exhibitor may dictate to management the conditions under which he/she shall exhibit. ALL RABBIT EXHIBITORS MUST EXHIBIT AT LEAST ONE OR MORE RABBITS FOR THE DURATION OF FAIR as space allows. Management will assign pens. All Rabbits shall remain for the Exhibitor's Show of Champions.
- B. Substitutions may be made only within the same breed, variety, sex and age (class) as the animal being withdrawn and must be made no later than one hour prior to judging.
- C. All animals must be identified by permanent ear markings conforming to the entry form on arrival of the show. Any duplication of ear markings by one exhibitor in the same division must be eliminated and the change recorded on the judging sheet before judging takes place.
- D. Rabbits will be entered on the standard fair form. Rabbits must be entered by breed, variety, sex, ear numbers, age in month and in the correct division and class with required owner's and leader's signatures to be considered a valid entry.
- E. Animals will be shown and judged in the proper division and class for breed, variety, age and sex only. Rabbits that are disqualified because of permanent defects, deformities or blemishes, and those absent at time of judging do not count when computing the number of exhibitors in the class.
- F. Positively no does with litters will be admitted into the showroom. **NO PREGNANT DOES!**
- G. All rabbits will be fed and cared for by the exhibitor. No "For Sale" signs will be allowed on the cages. Failure to comply with any of the above will be cause for the Exhibitor to remove his/her animal from the premises.
- H. All rabbits entered at the owner's risk. Judges and show personnel are not responsible in any way. All reasonable precautions will be taken to ensure the rabbits' safety.
- I. Exhibitors will be expected to bring their own rabbits to the judging table. If exhibitor is busy in another barn, it is his/her responsibility to arrange for another 4-H, FFA or Grange member to get his/her rabbit to the table.
- J. Per A.R.B.A. rulings, rabbits entered in Fur Division must also be in a Breed Division.
- K. Any person or persons who qualify to show by age for 4-H, FFA, Grange or Independent and are over the youth required age for A.R.B.A. may still show but will not receive points towards year end total club points.
- L. ANY VIOLATION of state or local rules will result in loss of any awards. STATE RULES APPLY.
- M. ANY RABBITS IN BUILDING AFTER 6 PM ON SUNDAY WILL BE LOCKED IN UNTIL MONDAY!!!

Rules, definitions & judging procedures as prescribed in the latest edition of the Guide Book & Standard of the American Rabbit Breeder's Association, Inc. shall apply to all judging provided they don't conflict with any of the Dept. of Food & Agriculture rules.

RABBITS Continued on next page

RABBITS Continued

POSSIBLE DIVISION PLACING:

Best of Breed; Best Opposite Sex Variety;
Best Variety; and/or Best Opposite Sex Breed.
It is the judge's discretion to award these awards.

Entry Fee: \$.50 per entry per class
No Premiums offered - Ribbons only

BEST OF SHOW
*sponsored by The Feed Barn -
John & Susan Manning*

RESERVE BEST OF SHOW
*sponsored by Aloha Septic
Steve White & Ken Nuckton*

The Best of Breeds sponsored are awarded to the overall
best rabbit of that breed.

PUREBRED BREEDING ANIMALS

HEAVYWEIGHTS

HEAVYWEIGHT RABBIT DIVISIONS (#36 TO #39) USE THE
FOLLOWING CLASS NUMBERS:

Class

1. Senior Buck - over 8 months
2. Senior Doe - over 8 months
3. Intermediate Buck - 6 to 8 months
4. Intermediate Doe - 6 to 8 months
5. Junior Buck - under 6 months
6. Junior Doe - under 6 months

DIVISION 36 – CALIFORNIAN

BEST OF BREED – CALIFORNIAN
sponsored by The Santinelli Family

DIVISION 37 – NEW ZEALAND

State variety on entry form

BEST OF BREED – NEW ZEALAND
sponsored by Shenandoah Valley Veterinary Clinic

DIVISION 38 – FLEMISH GIANT

BEST OF BREED – FLEMISH GIANT
sponsored by Skyline Cabinets

DIVISION 39 – ALL OTHER HEAVY WEIGHTS

state breed on entry form

**~ Anything other than straw or
shavings is prohibited for livestock
bedding. ~**

**1st Bedding Sponsored By
The Feed Barn**

**PLEASE DON'T FORGET TO
THANK YOUR SPONSORS!!!**

LIGHTWEIGHTS

LIGHTWEIGHT RABBIT DIVISIONS (#40 TO #51) USE THE
FOLLOWING CLASS NUMBERS:

Class

7. Senior Buck - over 6 months
8. Senior Doe - over 6 months
9. Junior Buck - under 6 months
10. Junior Doe - under 6 month

STATE VARIETY OF BREED ON FORM
(i.e. black, blue, chocolate, red, sable, tort etc.)

DIVISION 40 – DUTCH

BEST OF BREED – DUTCH
sponsored by Skyline Cabinets

DIVISION 41 – ENGLISH LOP

DIVISION 42 – FRENCH LOP

DIVISION 43 – HOLLAND LOP

DIVISION 44 – JERSEY WOOLY

DIVISION 45 – MINI LOP

BEST OF BREED – MINI LOP
sponsored by John & Alice Sillis

DIVISION 46 – MINI REX

BEST OF BREED – MINI REX
sponsored by John & Alice Sillis

DIVISION 47 – NETHERLAND DWARF

BEST OF BREED - NETHERLAND DWARF
sponsored by Elizabeth Swason

DIVISION 48 – POLISH

DIVISION 49 – REX

DIVISION 50 – RHINELANDER

BEST OF BREED – RHINELANDER
sponsored by The Santinelli Family

DIVISION 51 – ALL OTHER LIGHTWEIGHTS
state breed on entry

DIVISION 53 – EXHIBITOR BRED RABBITS

Own Award sponsored by Ione Community 4-H

Limited to Amador County Exhibitors Only.
Exhibitor must own both parents.

Must provide a copy of the pedigree of both parents for
the show secretary on the day of the show as proof.

Limit: three (3) entries per Exhibitor.
Entry Fee: \$.50 per entry per class
No Premiums offered - Ribbons only

Class

11. 4-H/FFA/Grange/Independent

RABBITS Continued on next page

RABBITS Continued

FUR ANIMALS

No Premiums Offered - Ribbons 1st through 3rd

- A. Animals must have been shown and qualified in regular breed classes. Animals eliminated for over or under standard weight may NOT compete in fur classes, as described in ARBA show rules.
- B. Duplication of identification numbers is accepted on animals of different breed in the Fur Classes.
- C. Fur entries must be clearly stated on entry form. Absence of ear marking on entry form will eliminate animal from competition.
- D. Exhibitors are limited to four entries.

DIVISION 54 - FUR ANIMALS

BEST OF FUR
sponsored by Open

Class

- 12. Normal Fur
- 13. Rex Fur
- 14. Wool
- 15. Satin Fur

MEAT RABBITS

FORMS & FEES DUE By: Tuesday, July 6, 6 pm
Entries In Place By: Wed., July 28, by 8 am
Entries Judged: Walk on Show -
Wed., July 28, 9 am
Livestock Release is required.
Any animals in building after 6 pm Sun will not
be released until Monday, Aug. 2, 8 am



MEAT RABBITS

Danish System of Judging
NO Premiums offered - Ribbons Only

Entry Fee: \$.50 per Entry
Limit: 2 Meat Pen, 2 Single Fryers per Exhibitor

RULES:

- A. The exhibitor must OWN the project animals 60 days prior to the start of the Fair. The 4-H, Grange Leaders &/or FFA Advisor must submit a complete list of all eligible exhibitors to the Jr. Livestock Auction Committee 60 days prior to the start of the fair.
- B. All meat pens and single fryers with animals not over 70 days of age will be eligible for sale in the Jr. Livestock Auction with only Champions and Reserves selling.
- C. First and second place meat pens and single fryers will be Champion and Reserve Champion in both 4-H/Grange and FFA/Grange Divisions.

DIVISION 55 - 4-H & GRANGE MEAT RABBITS

CHAMPION MEAT PEN

sponsored by Gold Nugget 4-H Club
Buckle sponsored by OPEN

RESERVE CHAMPION MEAT PEN

sponsored by Open

CHAMPION FRYER

sponsored by Foothill Space Center -
Jim & Jan Harris
Buckle sponsored by OPEN

RESERVE CHAMPION FRYER

sponsored by Open

Class

- 16. Meat Pen - 3 rabbits 3 lbs to 5½ lbs each
- 17. Single Fryer - 3 lbs to 5½ lbs.

DIVISION 56 - FFA & GRANGE MEAT RABBITS

CHAMPION MEAT PEN

sponsored by Open
Buckle sponsored by OPEN

RESERVE CHAMPION MEAT PEN

sponsorship by Mervin & Kathy Vicini

CHAMPION FRYER

sponsored by Open
Buckle sponsored by OPEN

RESERVE CHAMPION FRYER

sponsored by Open

Class

- 18. Meat Pen - 3 rabbits 3 lbs to 5½ lbs each
- 19. Single Fryer - 3 lbs to 5½ lbs

CAVIES

FORMS & FEES DUE BY: Tuesday July 6, 6 pm
Entries In Place By: Wed., July 28, by 8 am
Entries Judged: Walk on Show Wed., July 28, 9 am
Livestock Release is required.
Any animals in building after 6 pm Sun will not be
released until Monday, Aug. 2, 8 am



AMERICAN SYSTEM OF JUDGING
Local Classes-Open to Members of 4-H & Grange Clubs,
FFA Chapters, & Independents
of Amador Co.

CAVIES Continued on next page

CAVIES Continued

Entry Fee: \$.50 per entry per class
Limit: 6 Entries per exhibitor per class
NO PREMIUMS Offered - Ribbons Only

BEST OF SHOW

*sponsored by David & Sherri Elliott
in memory of "Spock"*

RESERVE BEST OF SHOW

sponsored by OPEN

DIVISION 57 - 4-H/GRANGE

Class

1. Senior Boar - 6 months or older, Over 32 oz.
2. Intermediate Boar - 4 to 6 months of age, 22 oz. Minimum / 32 oz. maximum
3. Junior Boar under 6 months of age, 22oz. Minimum -32 oz. maximum
4. Senior Sow - 6 months of age or older, Over 32 oz.
5. Intermediate Sow - 4 to 6 months of age, 22 oz. Minimum / 32 oz. Maximum
6. Junior Sow under 6 months of age, 22oz. Minimum / 32 oz. Maximum

DIVISION 58 - FFA/GRANGE

Class

1. Senior Boar - 6 months or older, Over 32 oz.
2. Intermediate Boar - 4 to 6 months of age, 22 oz. Minimum / 32 oz. maximum
3. Junior Boar under 6 months of age, 22oz. Minimum -32 oz. maximum
4. Senior Sow - 6 months of age or older, Over 32 oz.
5. Intermediate Sow - 4 to 6 months of age, 22 oz. Minimum / 32 oz. Maximum
6. Junior Sow under 6 months of age, 22oz. Minimum / 32 oz. Maximum

SWINE

FORMS & FEES DUE BY: Tuesday, July 6, 6 pm
Entries In Place By: Tuesday, July 27, by 3 pm
Entries Judged: Thurs., See Livestock Schedule
Entries Released: Sunday, Aug. 1, 6 pm



Danish System of Judging
Local classes - Open to Members of 4-H, Grange, FFA & Independents of Amador & Calaveras Co.
All Breeds Judged Together

Entry Fee: \$1.50 per entry
NO Premiums offered

SWINE RULES:

A. All market swine must be individually owned by the exhibitor for 60 days prior to the opening day of the Fair.

B. DUE TO WEIGHT VARIANCES, ENTRIES SHOULD BE MADE BY DIVISION NUMBER ONLY.

C. Animals will be classified by class in accordance with instructions in the local rules. Entries will be weighed by the management upon arrival at the fairgrounds & placed in proper classes. One exhibitor must own all animals in each entry. Animals entered in weight divisions must arrive on the grounds in time to be weighed in on Tuesday, July 27 @ 3:00 p.m.

D. It is the intent of the Division of Fairs & Expositions and the Fair that quality standards established for market animals be maintained. Therefore, classifications will be subject to change in the event there are changes made in Federal grading. Top weight limitations for the Auction is 275 lbs. Animals exceeding this weight will be sold at top weight limitations for 4-H, Grange, FFA and Independent.

MARKET HOG SCORE CARD

MARKETABLE PLUS: U.S. No. 1 Hogs of superior and conformation acceptable in leanness, muscularity and production traits. (PURPLE ribbon)

MARKETABLE: U.S. No. 2 Hogs of average conformation and that are acceptable in leanness, muscularity and production traits. (BLUE ribbon)

NON-MARKETABLE: Any hog of below average conformation including U.S. No. 3, U.S. No. 4, and utility grade hogs. (RED ribbon)

~ Anything other than straw or shavings is prohibited for livestock bedding. ~

1st Bedding Sponsored By The Feed Barn

DIVISION 59 - 4-H & GRANGE ALL BREEDS

Class

Weight

1. Market Hogs 215 to 275 - not to exceed 300

CHAMPION AWARD

sponsored by Plymouth Hardware & Feed

CHAMPION BUCKLE

sponsored by Dave Scott - In Memory of Bart Scott

RESERVE CHAMPION AWARD

sponsored by In Memory of Kathy Hutchison

RESERVE CHAMPION BUCKLE

(Amador Co. Exhibitor Only)

sponsored by Rick Vance Trucking

SWINE Continued on next page

SWINE Continued

DIVISION 60 – FFA & GRANGE ALL BREEDS

Class	Weight
2. Market Hogs	215 to 275 - not to exceed 300

CHAMPION AWARD
sponsored by Gaylan & Debra Miller

CHAMPION BUCKLE
sponsored by Ken & Jeanne Deaver

RESERVE CHAMPION AWARD
sponsored by Ione Good Ole Guy & Gals

RESERVE CHAMPION BUCKLE
sponsored by Double SS Auction Co. - Seth Seever

Any hogs not making sale may be released from fairgrounds the day they were shown, after 5:00 p.m. You must first obtain livestock release from the livestock superintendent.

SINGLE FEEDER ANIMALS

Danish System of Judging
All Breeds Judged Together

Premiums Offered Per Class

1st Group - U.S. No.1 Grade	\$6.00
2nd Group - U.S. No. 2 Grade	\$3.50
3rd Group - No. 3 & No. 4 Utility/Cull	

TOP SINGLE FEEDER ANIMAL AWARD
sponsored by Open

DIVISION 61 – 4-H, GRANGE & FFA ALL BREEDS

Class	Weight
3. Feeder Pig	70 to 120 lbs.
4. Feeder Pig	121 to 214 lbs.

SWINE RATE OF GAIN

DIVISION 62 – HOG RATE OF GAIN CONTEST
No Pre-Entry Required

Class	
5. Hog Rate Of Gain Contest	
4-H/GRANGE AWARD <i>sponsored by Ed & Laura Peters</i>	
FFA/ GRANGE AWARD <i>sponsored by Open</i>	
Premium Scale	
1 st - \$20.00	2 nd - \$15.00 3 rd - \$10.00

Premiums will be awarded to 4-H/Grange & FFA/Grange winners

RULES FOR RATE OF GAIN:

- A. Any eligible for sale at the Junior Auction at the Fair is eligible for the contest.
- B. The animal must be weighed at hog weigh- in day, which is approximately 60 days prior to the auction.
- C. The weight of the hog at the fair will be used as out weight.

RULES FOR RATE OF GAIN Continued:

D. Calculation: Net gain divided by number of days between pre-weigh in and fair weigh-in equals rate of gain.

E. The 4-H/Grange & FFA/Grange member with the highest rate of gain per day will be named winners.

F. The results will be announced after the Champion is announced.

DIVISION 63 – PIG BOARDS

sponsored by John & Colleen & Sam & Michelle Begovich

Bob & Carol Sleeper- The Crain/ Sleeper Ranch

Open to 4-H, Grange, FFA and Independent Livestock Project Exhibitors. Need not be in the Swine Project. Must pre-enter and exhibit to be delivered to the Fair by:

Tuesday July 28, at 5 pm.

Entries to be used in the Swine show.

1 st	2 nd	3 rd
\$25	\$15	\$10

- A. Must be Minimum 30" wide x Maximum 36" tall.
- B. Must have a Minimum of two (2) handles.
- C. Must be usable, i.e. no glue or attached items.
- D. No club or personal identification can be written on the boards.

Class

- 6. 9 to 14 yrs. old
- 7. 15 to 19 yrs. old

**AMADOR COUNTY
LOCALLY PRODUCED
MARKET SWINE**

Classes are open to all Amador County swine junior exhibitors who are exhibiting market animals. The dam must have been owned by an Amador County resident and was maintained in Amador County at the time of the project animal's birth.

NOTE: A form must be submitted with the fair entry in order to be eligible for this class. Forms are available at the Fair's Entry Office.

DIVISION 64 – LOCALLY PRODUCED MARKET ANIMAL - SWINE

Class

- 1. 4-H/Grange/Independent
- BUCKLE – BEST LOCAL BRED**
sponsored by Ken Matson
- AWARD – BEST LOCAL BRED**
sponsored by Littlefield Ranch
- AWARD – BEST RESERVE LOCAL BRED**
sponsored by Ranchers Outlet – R & C Vicini

Class

- 2. FFA/Grange/Independent
- BUCKLE – BEST LOCAL BRED**
sponsored by Ken Matson
- AWARD – BEST LOCAL BRED**
sponsored by Steve Stymeist Auto Body
- AWARD – BEST RESERVE LOCAL BRED**
sponsored by Sandra Gianandrea

WORKING GOATS

FORMS & FEES DUE BY: Tuesday, July 6, 6 pm
Entries In Place By: Wednesday, July 28, by 1 pm
Entries Judged: Wednesday, July 28, 1 pm
– Walk on Show –
Entries Released: After class is completed.



American System of Judging
Pack Goat Obstacle Course

Open to 4-H, FFA, & Grange of Amador County only.
 All entries must be owned by the Exhibitor

WORKING GOATS ARE A WALK ON SHOW.

Entry Fee: \$1.00 per entry
 All Breeds Judged Together
 No Premiums Offered
 Ribbons thru 5th place

BEST WORKING GOAT AWARD
sponsored by John & Alice Sillis

RESERVE BEST WORKING GOAT AWARD
sponsored by John & Alice Sillis

RULES:

- A. All exhibitors will wear a 4-H hat & hiking clothes and shoes (suitable for the weather).
- B. 4-H Primary member exhibitors may only enter acceptable Primary Member goats. 4-H Junior, intermediate, & senior members may enter any breed of goat or crossbreed goats.
- C. All goats must be on a lead rope with a collar or halter.
- D. Only goat packs, suitable for on-trail packing, are allowed.
- E. The 4-H member prepares all packs worn in the show ring.
- F. Essential on-trail equipment, not contained in goat pack, will be carried by the exhibitor in a backpack or waist pack.
- G. If an exhibitor has more than one animal entered in a class, another 4-H Jr., Intermediate, or Sr. member may hold the animal(s) in the staging area.

SCORING FOR PACK GOATS

5 possible points for each of 5 obstacles

No hesitation & no faults	5 pts
Slight hesitation & minor faults	3 pts
Refusal	0 pts
<u>Possible points for response to judge's questions</u>	<u>10 pts</u>
<u>Total possible points</u>	<u>35 pts</u>

Penalty Points deducted for each infraction:

Exhibitor appearance not appropriate	-2 pts
Animal not cleaned or groomed	-2 pts
Animal uncontrollable	-2 pts
Animal butts or challenges other goats	-2 pts
Hooves not trimmed	-2 pts

DIVISION 65 – PRIMARY PACK GOAT
 OBSTACLE COURSE

BEST OF DIVISION
 PRIMARY 4-H PACK GOAT OBSTACLE COURSE
sponsored by John & Alice Sillis

Class

- 1. Doe or Wether – Under 1 year
 - a. Optional: wears an empty pack, according to size and weight of goat.
- 2. Doe or Wether – 1 to 2 years
 - a. Wears an empty pack.
 - b. Optional: pack with equipment, up to 10 lbs. of total load, according to size & weight of goat
- 3. Doe or Wether – 2 years & over
 - a. Wears pack with equipment, up to 10 lbs. of total load, according to size & weight of goat.

DIVISION 66 – NOVICE, INTERMEDIATE
 & ADVANCED PACK GOAT
 OBSTACLE COURSE

BEST OF DIVISION
 WORKING GOAT AWARD
*sponsored by Michael & Valerie Andersson
 Anderson Acres*

Class

- 1. Doe or Wether – Under 1 year
 - a. Optional: wears an empty pack, according to size and weight of goat.
- 2. Doe or Wether – 1 to 2 years
 - a. Wears an empty pack.
 - b. Optional: pack with equipment, up to 10 lbs. of total load, according to size & weight of goat
- 3. Doe or Wether – 2 years & over
 - a. Wears pack with equipment, up to 10 lbs. of total load, according to size & weight of goat.

DAIRY GOATS

FORMS & FEES DUE BY: Tuesday, July 6, 6 pm
Entries In Place By: Tuesday, July 27, by 3 pm
Entries Judged: Thurs., 2 pm
Entries Released: Sunday, Aug. 1, 6 pm



DAIRY GOATS

American System of Judging
 Local Classes: Open 4-H, Grange, & FFA members &
 Independents of Amador & Calaveras Counties

DAIRY GOATS Continued on next page

DAIRY GOATS Continued

REGISTERED PUREBRED BREEDING ANIMALS

DAIRY GOAT RULES:

- A permanent ear tag or tattoo is required. Animals with a "Certificate of Registry" (BROWN BORDER) issued by the American Dairy Goat Association are not eligible. The American Goat Society issues registration certificates for purebred animals only.
- Scrapies tags are required. Written documentation needs to be present at the time of the show – the documentation may be requested by the judge and/or livestock superintendent or clerk. (See page 22) for more information).
- The pre show milk-out will be held on Wednesday, July 28 at 7:00 pm. All animals to be milked in designated area, under supervision of 4-H, Grange FFA & Independent exhibitors elected by each club.
- All goats need identification – registered or grade.
- Base date: Thursday, July 29, 2010.

DAIRY GOATS

Entry Fee: \$1.00 per animal
Premiums offered per class

1st	2nd	3rd	4th	5th
\$4.50	\$3.00	\$2.50	\$1.50	\$1.00

**DIVISION 67 – 4-H, GRANGE & FFA
ALL PUREBRED NUBIAN DOES**

Class	Birth Date
1. Junior Kid	Apr. 16, 10 – Jun. 25, 10
2. Intermediate Kid	Mar. 1, 10 – April 15, 10
3. Senior Kid	Jan. 1, 10 – Feb. 29, 10
4. Junior Yearlings	Jul. 1, 09 – Dec. 31, 09
5. Senior Yearling Not In Milk	Jan. 1, 09 – Dec. 31, 09
6. Yearling Milker	Jan. 1, 09 – Dec. 31, 09
7. Two Years - Under 3	Jan. 1, 08 – Dec. 31, 08
8. Three Years - Under 4	Jan. 1, 07 – Dec. 31, 07
9. Four Years and Over	Prior to Jan. 1, 07

JUNIOR CHAMPION
sponsored by Open

RESERVE JUNIOR CHAMPION
sponsored by Open

SENIOR CHAMPION
sponsored by Open

SENIOR RESERVE CHAMPION
sponsored by Open

GRAND CHAMPION NUBIAN
sponsored by PJ & Deanne Karnaze

RESERVE GRAND CHAMPION NUBIAN
sponsored by The Timmons Family

BEST UDDER AWARD

A \$15 cash award Sponsored by Oak Gold Nubians
Awarded to the best udder of Divisions 67, 68 & 69

**DIVISION 68 – 4-H, GRANGE & FFA
ALL OTHER PUREBRED DOES**

Class	Birth Date
10. Junior Kid	Apr 16, 10 – Jun 25, 10
11. Intermediate Kid	Mar 1, 10 – Apr 15, 10
12. Senior Kid	Jan 1, 10 – Feb 29, 10
13. Junior Yearlings	Jul 1, 09 – Dec 31, 09
14. Senior Yearling Not In Milk	Jan 1, 09 – Dec. 31, 09
15. Yearling Milker	Jan 1, 09 – Dec 31, 09
16. Two Years - Under 3	Jan 1, 08 – Dec. 31, 08
17. Three Years - Under 4	Jan 1, 07 – Dec. 31, 07
18. Four Years and Over	Prior to Jan 1, 07

JUNIOR CHAMPION
sponsored by Open

RESERVE JUNIOR CHAMPION
sponsored by Open

SR. CHAMPION
sponsored by Open

RESERVE SR. CHAMPION
sponsored by Open

GRAND CHAMPION PUREBRED
sponsored by John & Alice Sillis

RESERVE GRAND CHAMPION PUREBRED
sponsored by Skip & Bunny Smith

RECORDED GRADE BREEDING ANIMALS

Entry Fee: \$1.00 per entry
Premiums offered per class

1st	2nd	3rd	4th	5th
\$4.00	\$3.00	\$2.00	\$1.50	\$1.00

**DIVISION 69 – 4-H, GRANGE & FFA
ALL BREEDS – DOES**

Class	Birth Date
19. Junior Kid	Apr. 16, 10 – June 25, 10
20. Intermediate Kid	Mar. 1, 10 – April 15, 10
21. Senior Kid	Jan. 1, 10 – Feb 29, 10
22. Junior Yearling	Jul 1, 09 – Dec 31, 09
23. Senior Yearling Not In Milk	Jan 1, 08 – Dec 31 08
24. Yearling Milker	Jan 1, 09 – Dec 31, 09
25. Two Years - Under	Jan 1, 08 – Dec 31, 08
26. Three Years - Under 4	Jan 1, 07 – Dec 31, 07
27. Four Years & Over	Prior to Jan. 1, 07

JUNIOR CHAMPION
sponsored by Open

RESERVE JUNIOR CHAMPION
sponsored by Open

SENIOR CHAMPION
sponsored by Open

SENIOR RESERVE CHAMPION
sponsored by Open

GRADE GRAND CHAMPION
sponsored by Open

GRADE RESERVE GRAND CHAMPION
sponsored by Open

DAIRY GOATS Continued on next page

DAIRY GOATS Continued

DIVISION 70 – 4-H, GRANGE & FFA
ALL BREEDS – WETHERS

- | | |
|---------------------------|------------------------------|
| <u>Class</u> | <u>Birth Date</u> |
| 28. Under 6 months | Jan 24, 10 - Jul 23, 10 |
| 29. 6 months to 12 months | Jan 24, 09, Jan 23, 10 |
| 30. 12 months & over | Working Before July 24, 2009 |

CHAMPION WETHER
sponsored by OPEN

RESERVE CHAMPION WETHER
sponsored by OPEN

DIVISION 71 – BEST OF DOES

- Class
31. Best Doe in Show (No Pre-entry required)

BEST DOE IN SHOW
sponsored by Cal Am Goat Breeders Association

All Grand Champions compete for
Best Doe in Show.

DIVISION 72 – 4-H, GRANGE & FFA

- Class
32. Dam & Daughter, – animals must have been shown in previous classes, all breeds judged together. Exhibitor must own animals.
33. Best any three females, – animals must have been shown in previous classes, all breeds judged together. Exhibitor must own animals.

\$25 AWARD FOR BEST DAM & DAUGHTER
sponsored by Vicini Ranch

AWARD FOR THE BEST THREE FEMALES
sponsored by Open

**NIGERIAN DWARF
GOATS**

FORMS & FEES DUE BY: Tuesday, July 6, 6 pm
Entries In Place By: Tuesday, July 27, by 3 pm
Entries Judged: Thurs. After Dairy Goats
Entries Released: Sunday, Aug. 1, 6 pm



American System of Judging
Entry Fee: \$1.00 per entry per class
Premiums offered per class
1st - \$3 2nd - \$2 3rd - \$1

- GRAND CHAMPION
sponsored by Cuneo Valley Ranch
RESERVE GRAND CHAMPION NIGERIAN
sponsored by OPEN
CHAMPION DOE KID
sponsored by OPEN
RESERVE CHAMPION DOE KID
sponsored by OPEN
JR. CHAMPION DOE
sponsored by OPEN
JR. RESERVE CHAMPION DOE
sponsored by OPEN
SR. CHAMPION DOE
sponsored by OPEN
SR. RESERVE CHAMPION DOE
sponsored by OPEN
CHAMPION WETHER
sponsored by OPEN
RESERVE CHAMPION WETHER
sponsored by OPEN
CHAMPION BUCK – BUCKLE
sponsored by OPEN
RESERVE CHAMPION BUCK
sponsored by OPEN

DIVISION 73 – NIGERIAN DWARF GOATS

- Class
1. Doe kids 3 months & under
2. Doe kids 4 months & over
3. Dry Yearlings, never bred
4. Yearling Milker
5. Does 2 – 3 years
6. Does 4 years and over
7. Wethers under 1 year
8. Wethers over 1 year
9. Bucks, Open (walk on show exhibit ONLY)

~ NOTE ~ ALL BUCKS ARE WALK ON
THEY MUST BE TAKEN OFF GROUNDS
IMMEDIATELY AFTER SHOW!!!

**PLEASE DON'T FORGET
TO THANK YOUR
SPONSORS!!!**

**1st Bedding Sponsored By
The Feed Barn**

~ Anything other than straw
or shavings is prohibited for
livestock bedding. ~

PYGMY GOATS

FORMS & FEES DUE BY: Tuesday, July 6, 6 pm
Entries In Place By: Tuesday, July 27, by 3 pm
Entries Judged: Thurs., After Nigerian Dwarf Goats
Entries Released: Sunday, August 1, 6 pm



American System of Judging
Entry Fee: \$1.00 per entry per class
Premiums offered per class
1st - \$3 2nd - \$2 3rd - \$1

GRAND CHAMPION PYGMY
sponsored by Tim & Sharon King

RESERVE GRAND CHAMPION PYGMY
sponsored by Gold Nugget 4-H

DIVISION 74 – PYGMY GOATS

Class

1. Doe kids 3 months & under
2. Doe kids 4 months & over
3. Dry Yearlings, never bred
4. Does under 2 years (never bred)
5. Does 2 – 3 years
6. Does 4 years and over
7. Wethers under 1 year
8. Wethers over 1 year
9. Bucks, Open, (walk on show ONLY)

CHAMPION DOE KID
sponsored by OPEN

RESERVE CHAMPION DOE KID
sponsored by OPEN

JR. CHAMPION DOE
sponsored by OPEN

JR. RESERVE CHAMPION DOE
sponsored by OPEN

SR. CHAMPION DOE
sponsored by OPEN

SR. RESERVE CHAMPION DOE
sponsored by OPEN

CHAMPION WETHER
sponsored by OPEN

RESERVE CHAMPION WETHER
sponsored by OPEN

CHAMPION BUCK – BUCKLE
sponsored by OPEN

RESERVE CHAMPION BUCK
sponsored by OPEN

~ NOTE ~ ALL BUCKS ARE
WALK ON THEY MUST BE TAKEN
OFF GROUNDS IMMEDIATELY
AFTER SHOW!!!

MILKING CONTEST

FORMS & FEES DUE BY: Tuesday, July 6, 6 pm
Entries In Place By: Tuesday, July 27, by 3 pm
Entries Judged: Thurs., After Pygmy Goats
Entries Released: Sunday, August 1, 6 pm

DIVISION 75 – MILKING CONTEST 4-H, GRANGE & FFA

A milking contest is to be held after all divisions of Dairy Goat classes have been completed. All animals must have been shown in previous classes.

Exhibitor must own animals.

**Goats to be milked out Wednesday, July 28 at 7 PM and Final Milk out, for awards, will be Thursday, July 29, after Dairy classes are completed. (See Livestock Schedule) All Grades & breeds will compete together.

Class

Birth Date

- | | |
|--------------------------|-------------------------|
| 1. Yearling Milker | Jan 1, 09 – Dec 31, 09 |
| 2. Two Years - Under 3 | Jan 1, 08 – Dec. 31, 08 |
| 3. Three Years - Under 4 | Jan 1, 07 – Dec. 31, 07 |
| 4. Four Years and Over | Prior to Jan 1, 07 |

HEAVIEST MILK WEIGHT

\$10 in each age group
sponsored by Skip & Bunny Smith

HIGHEST OVERALL MILKER = \$25.00

sponsored by Oak Gold Nubians

MARKET GOATS

FORMS & FEES DUE BY: Tuesday, July 6, 6 pm
Entries In Place By: Tuesday, July 27, by 3 pm
Entries Judged: Friday., - See Livestock Schedule
Entries Released: Sunday, August 1, 6 pm



American System of Judging
Open to 4-H, Grange, & FFA & Independents
of Amador County

All Breeds Judged Together
Entry Fee: \$1.00 per entry
No Premiums Offered

MARKET GOAT Continued on next page

MARKET GOAT Continued

MARKET GOAT RULES:

- A. Age requirement: maximum of 9 months old (must be able to show milk teeth).
- B. Market goats must be slick sheared or 3/8-inch hair only.
- C. ALL market goats must be dehorned or tipped.
- D. Castration sites must be healed and free of signs of inflammation. No Bucks.
- E. Market goats must be owned & supervised by the exhibitor for no less than 60 days prior to the opening of the fair. Top weight limitations for the Auction are 130lb.
- F. All market goats must be Scrapie tagged.
- G. May be shown in a halter or collar.
- H. No lifting of front feet off the ground.

MARKET GOAT SCORE CARD

MARKET READY: USDA Prime or Choice quality with 12th rib back fat range .08 - .12 most desirable, .13 - .22 back fat acceptable, average, or greater conformation and cutability.

NOT MARKET READY: Good or lower quality grade with 12th rib back fat range (.08 or) .22, under finished goats grading USDA good or lower, below average conformation or cutability.

DIVISION 76 – 4-H & GRANGE ALL BREEDS

Class	Weight
1. Market Goats	70lb to no maximum
4-H CHAMPION MARKET GOAT	
<i>Buckle sponsored by Jeanette Landberg</i>	
<i>sponsored by Ranchers Outlet – R & C Vicini</i>	

4-H RESERVE CHAMPION MARKET GOAT
sponsored by Felizardo & Deanna Ding

DIVISION 77 – FFA & GRANGE ALL BREEDS

Class	Weight
2. Market Goats	70lb to no maximum
FFA CHAMPION MARKET GOAT	
<i>sponsored by Ranchers Outlet – R & C Vicini</i>	

FFA RESERVE CHAMPION MARKET GOAT
sponsored by Cuneo Valley Ranch

**AMADOR COUNTY
 LOCALLY PRODUCED
 MARKET GOAT**

Classes are open to all Amador County goat junior exhibitors who are exhibiting market animals. The dam must have been owned by an Amador County resident and was maintained in Amador County at the time of the project animal's birth.

NOTE: A form must be submitted with the fair entry in order to be eligible for this class. Forms are available at the Fair's Entry Office.

**DIVISION 78 – LOCALLY PRODUCED
MARKET ANIMAL - GOAT**

Class
 1. 4-H/Grange/Independent

AWARD – BEST LOCAL BRED
sponsored by Jeanette Landberg

AWARD – BEST RESERVE LOCAL BRED
sponsored by OPEN

Class
 2. FFA/Grange/Independent

AWARD – BEST LOCAL BRED
sponsored by Ranchers Outlet – R & C Vicini

AWARD – BEST RESERVE LOCAL BRED
sponsored by Steve Stymeist Auto Body

**MEAT GOAT BREED
 SHOW**

FORMS & FEES DUE BY: Tuesday, July 6, 6 pm
Entries In Place By: Friday, July 30, by 12 noon
Entries Judged: Friday. - See Livestock Schedule
Entries Released: After class is completed.



American System of Judging
 Open to Amador, Calaveras & El Dorado County Residents

Entry Fee: \$5.00 per animal
 Ribbons Only

Rules:

- A. Entries are on a first come first serve basis as room allows.
- B. Exhibits to be released at the completion of the show. Livestock release required.
- C. All Meat goats must be scrapie tagged.
- D. All goats must have legible tattoo(s) or other means of permanent identification.
- E. Any female over 24 months of age that has not kidded and cannot prove current pregnancy will not be allowed to show.
- F. Registered and unregistered does will be accepted. All does must be of meat type breeding.
- G. Age is calculated based on first day of Fair.
- H. Does less than 1 year of age must show kid teeth.
- I. May be shown in halter or collar.

MEAT GOAT BREED SHOW Continued
on next page

MEAT GOAT BREED SHOW Continued

DIVISION 79 – REGISTERED BOER & REGISTERED BOER CROSS

Class	Birth Date
1. Kid Doe	Jan 01, 10 – July 01, 10
2. Young Doe	July 26, 09 – Dec 31, 09
3. Aged Doe	Born prior to July 26, 08

GRAND CHAMPION REGISTERED DOE
sponsored by OPEN

RESERVE GRAND CHAMPION REGISTERED DOE
sponsored by OPEN

DIVISION 80 – GRADE/UNREGISTERED BOER CROSS GOATS

Class	Birth Date
1. Kid Doe	Jan 01, 10 - July 01, 10
2. Young Doe	July 26, 09 – Dec 31, 09
3. Aged Doe	Born prior to July 26, 08

GRAND CHAMPION REGISTERED DOE
sponsored by OPEN

RESERVE GRAND CHAMPION REGISTERED DOE
sponsored by OPEN

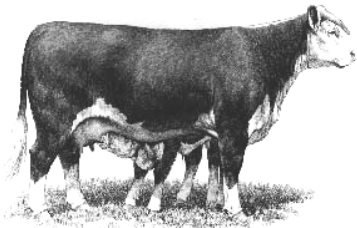
PLEASE DON'T FORGET TO THANK YOUR SPONSORS!!!

1st Bedding Sponsored By The Feed Barn

~ Anything other than straw or shavings is prohibited for livestock bedding. ~

BREEDING CATTLE

FORMS & FEES DUE BY: Tuesday, July 6, 6 pm
Entries In Place By: Tuesday, July 27, by 3 pm
Entries Judged: Friday. - See Livestock Schedule
Entries Released: Sunday, August 1, 6 pm



American System of Judging

Local Classes - Open to members of 4-H, Grange Clubs, FFA Chapters & Independents in Amador & Calaveras Counties

REGISTERED PUREBRED BREEDING ANIMALS

Entry Fee: \$3.00

Premiums offered per class

1 st	2 nd	3 rd	4 th	5 th
\$21.50	\$18.00	\$14.00	\$10.00	\$7.50

NOTE: Nurse cows will not be permitted on the Fairgrounds. (Natural Mothers are accepted).

CHAMPION PUREBRED BULL
sponsored by Ray Miller's Family – In memory of Fred Gansberg

RESERVE CHAMPION BULL
sponsored by John C. Begovich Memorial Fund

CHAMPION PUREBRED FEMALE
sponsored by OPEN

RESERVE CHAMPION FEMALE
sponsored by Open

DIVISION 81 – 4-H/GRANGE & FFA ALL BREEDS BULLS

Class	DATE OF CALVING
1. Junior Calf	Jan. 1, 10 - Mar. 31, 10
2. Senior Calf	Sep. 1, 09 - Dec. 31, 09
3. Jr. & Summer Yearling	Jan. 1, 09 - Aug. 31, 09
4. Senior Yearling	Mar. 1, 08 - Dec. 31, 08

DIVISION 82 – 4-H/GRANGE & FFA ALL BREEDS FEMALES

Class	DATE OF CALVING
5. Junior Calf	Jan. 1, 10 - Mar. 31, 10
6. Senior Calf	Sep. 1, 09 - Dec. 31, 09
7. Summer Yearling	May 1, 09 - Aug. 31, 09
8. Junior Yearling	Jan. 1, 09 - Apr. 30, 09
9. Senior Yearling	Mar. 1, 08 - Dec. 31, 08

DIVISION 83 – GROUPS

CHAMPION COW/CALF AWARD
sponsored by Open

RESERVE CHAMPION COW/CALF AWARD
sponsored by Steve Stymeist Auto Body

All owned by one exhibitor and entered by Individuals junior get of sire:

- Class
10. Three animals, summer yearling or younger, get of same bull, both sexes represented.
 11. PAIR OF FEMALES: Two Females.
 12. COW/CALF: Cow may be any age but calf must be nursing and not be older than 7 months of age.

BREEDING CATTLE Continued on next page

BREEDING CATTLE Continued

GRADE OR UNREGISTERED PUREBRED ANIMALS SIRED BY PUREBRED SIRE

RULES: Animals entered in the following classes cannot be entered in any other class of the Beef Cattle Division. Animals that have been registered by a purebred breed association cannot be entered in this division.

Entry Fee: \$3.00 per entry

Premiums offered per class

1 st	2 nd	3 rd	4 th
\$15.00	\$11.00	\$7.50	\$5.50

DIVISION 84 – 4-H, GRANGE & FFA ALL BREEDS

By his signature as the owner or agent on an entry form, the exhibitor also certifies that the sire of each animal entered in the following division for grade animals was either registered or purebred.

FEMALES

Class	Date Of Calving
13. Senior & Junior Calf	Sep. 1, 09 - Mar. 31, 10
14. Jr. & Summer Yearling	Jan. 1, 09 - Aug. 31, 09
15. Senior Yearling	Mar. 1, 08 - Dec. 31, 08

CHAMPION GRADE FEMALE AWARD

*sponsored by Lyman & Sons, Inc
– In memory of Blaine & Ina Lyman*

RESERVE CHAMPION GRADE FEMALE AWARD

*sponsored by Foothill Space Center –
Jim & Jan Harris*

MARKET BEEF

FORMS & FEES DUE BY: Tuesday, July 6, 6 pm
Entries In Place By: Tuesday, July 27, by 3 pm
Entries Judged: Friday, July 30, 8 am
Entries Released: Sunday, August 1, 6 pm



Animals exceeding top weights will be allowed to show and sell if meeting standards and animals exceeding weights that sell will be sold at top weight limitations.

MARKET BEEF SCORE CARD

MARKETABLE PLUS: Animals grading USDA Prime or Choice in quality grade having superior and above average conformation and cutability. Yield Grade 1 or 2. (PURPLE ribbon)

MARKETABLE: Animals grading USDA Prime or Choice in quality grade having average conformation and cutability. Yield Grade 1, 2 or 3. Animals grading USDA Select + in quality grade; having superior conformation and cutability. Yield Grade 1 or 2. (BLUE ribbon)

NON-MARKETABLE: Animals grading USDA Prime or Choice in quality grade having below average conformation and cutability. Yield Grade 4 or 5. Underfinished animals that are average or below average in conformation grading Select + or lower in quality grade. (RED ribbon)

After weighing, market steers will be divided into weight lots within the 950 lbs. to no maximum limitation as desired for convenience.

ALL MARKET BEEF MUST BE INDIVIDUALLY OWNED BY THE EXHIBITOR FOR 120 DAYS PRIOR TO THE OPENING DAY OF THE FAIR.

MARKET BEEF RULES:

A. Due to the weight variances, entries should be made by division number only. Animals will be classified by class in accordance with instructions in the Local Rules. Animals entered in weight divisions must arrive on the grounds by 3:00 P.M. on Tuesday, July 27, to be weighed in.

B. Top weight limitations for Auction are: Heifers 1050 lbs. and Steers 1300 lbs. Animals exceeding these weights will be sold at top weight limitations for 4-H, Grange, FFA & Independent.

C. Any steers or heifers not making sale may be released from fairgrounds the day they were shown after 5:00 p.m. You MUST first obtain a livestock release form from the livestock superintendent.

Danish System of Judging
Entry Fee: \$2.50 per entry
No Premiums offered

DIVISION 85 – 4-H/GRANGE - ALL BREEDS

Class	Weight
16. Steer or Heifer	950 to no maximum

CHAMPION AWARD

sponsored by Frank & Cindy Moreno Trapier Vineyards

CHAMPION BUCKLE

sponsored by Amador-El Dorado-Sacramento Cattlemen's Assoc.

RESERVE CHAMPION AWARD

sponsored by Steve, Monica & John Boyes

RESERVE CHAMPION BUCKLE

sponsored by Vance Trucking - Helen Vance

DIVISION 86 – FFA/GRANGE – ALL BREEDS

Class	Weight
17. Steer or Heifer	950 to no maximum

CHAMPION AWARD

sponsored by Ione Good Ole Guys & Gals

CHAMPION BUCKLE

sponsored by Amador-El Dorado-Sacramento Cattlemen's Assoc.

RESERVE CHAMPION AWARD

sponsored by John & Nancy Hawkins

RESERVE CHAMPION BUCKLE

sponsored by Littlefield Ranch

AMADOR COUNTY LOCALLY PRODUCED MARKET BEEF

Open to all Amador County beef junior exhibitors who are exhibiting market animals owned & maintained by an Amador County resident beef producer at the time of the project animal's birth.

NOTE: A form must be submitted with the fair entry in order to be eligible for this class. Forms are available at the Fair's Entry Office.

DIVISION 87 – LOCALLY PRODUCED MARKET ANIMAL – BEEF

Class

1. 4-H/Grange/Independent

AWARD – BEST LOCAL BRED

sponsored by Cooper Vineyards – Dick Cooper

AWARD – BEST RESERVE LOCAL BRED

sponsored by John & Lee Jose

Class

2. FFA/Grange/Independent

AWARD – BEST LOCAL BRED

sponsored by John & Lee Jose

AWARD – BEST RESERVE LOCAL BRED

sponsored by Open

SINGLE FEEDER & STOCKER ANIMALS

Danish System of Judging & All breeds judged together

Entry Fee: \$2.50 per entry

Premiums offered per class

1st Group – Prime....	\$10.00
2nd Group – Choice...	\$ 9.00
3rd Group – Good...	\$3.50
4th Group – Standard	no premium

"NO PREMIUMS" will be paid on any animal that does not meet the weight requirements of the class.

DIVISION 88 – 4-H, GRANGE & FFA ALL BREEDS

Class

- | Class | Weight |
|--------------------------|-----------------|
| 1. Light weight feeders | 400 to 600 lbs. |
| 2. Medium weight feeders | 601 to 800 lbs. |
| 3. Heavy weight feeders | 801 to 949 lbs. |

TOP SINGLE FEEDER ANIMAL AWARD

sponsored by ACE Begovich

~ Anything other than straw or shavings is prohibited for livestock bedding. ~

BEEF RATE OF GAIN

BEEF RATE OF GAIN CONTEST

Premiums will be awarded to
4-H/Grange & FFA/Grange winners

RULES FOR BEEF RATE OF GAIN CONTEST

- A. Any steer eligible for sale at auction at the Fair is eligible for the contest.
- B. The animal must be weighed at steer weigh-in day, which is approximately 120 days prior to the Auction. This weight will be the weigh-in weight for the contest.
- C. The weight of the steer at the Fair will be used as the out weight.
- D. Calculation: Net gain divided by the number of days between pre-fair weigh-in and fair weigh-in equals rate of gain.
- E. The 4-H/Grange member and the FFA/Grange member with the highest rate of gain from 120 days weigh in to official weigh-in at fair will be judged the winners.
- F. The results will be announced after the Champion is announced.

No Pre-Entry Required

Premiums Offered:

1st - \$40 2nd - \$30 3rd - \$20

DIVISION 89 – 4-H, Grange & FFA RATE OF GAIN

Class

18. Beef Rate of Gain

PERSONAL AWARD FOR 4-H/GRANGE &
FFA/GRANGE

*sponsored by Carla Gianandrea –
In Memory of Gilbert Gianandrea*

4-H/GRANGE AWARD

sponsored by Libby Littlefield

FFA/ GRANGE AWARD

*sponsored by Richard & Laurie Forster –
Forster Livestock*

PREMIUMS

*sponsored by Forster Livestock -
Richard & Laurie Forster & Simmon's
Landscape*

BEEF CARCASS CONTEST

The Judge is sponsored by Gianandrea
Insurance

No Pre-Entry Required

Premiums

sponsored by Open

1st	2nd	3rd
\$40	\$30	\$20

BEEF CARCASS CONTEST Continued
on next page

BEEF CARCASS CONTEST Continued

DIVISION 90 – 4-H, GRANGE & FFA BEEF CARCASS CONTEST

Class

19. Beef Carcass Contest

PERSONAL AWARD FOR 4-H/GRANGE & FFA/GRANGE

sponsored by Carla Gianandrea –
In Memory of Gilbert Gianandrea
Premiums will be awarded to the overall winner.

Rules for Beef Carcass Contest

1. Carcass must grade USDA High Select or better.
2. Placings will be based on quality grade and yield grade.
3. Calculations using a USDA Beef Carcass yield grade finder:
 - A. Yield of boneless retail cuts to nearest 0.1%
 - B. Quality grade to nearest 1/3 of a grade under USDA Standards.
 - C. Add or subtract 0.8% from yield of cuts for each 1/3 quality grade above or below "Low Choice".
 - D. This gives the index score, which combines the yield and quality factors into a carcass index.

RALPH CLARK AWARD

Sponsored by Jackson Tire

The winner's name to be engraved on Perpetual Plaque and a \$1,000 check to be presented at the Jackson Tire Store in Jackson to the winner upon completion of the contest.

ULTRA-SOUND CARCASS CONTEST

On site sign up with Cathy Jauch – Coordinator
Systems Approach to Livestock Evaluation

Entry Fee: \$5.00 per entry
Premiums offered per class

1 st	2 nd	3 rd
\$200	\$150	\$50

PREMIUMS

sponsored by Amador, El Dorado, Sacramento
Cattlemen's Association

The Systems Approach uses a scorecard, which is one part of a program to provide junior exhibitors a learning experience that emphasizes all aspects of production. It is used to evaluate the total product rather than just the live animal as it appears on show day. The Systems Approach will reward exhibitors for their learning and effort for the entire year.

If we attempt to teach junior exhibitors proper selection, care and nutrition, then we should reward them for their successes in those areas. The scorecard actually gives several evaluations and weights each category to

determine a composite score. Exhibitors can be successful on one, two and all three areas on the scorecard and by doing so can be successful without "winning" the class.

Part 1 – Lean Yield. Part 2 – Usefulness Evaluation. Part 3 – Gain and Quality Grade. Details of the process will be explained at the end of the exhibitors meeting, Tuesday, July 27th. This contest will be performed at the time of weigh-in. The result to be announced after the Grand Champion is selected.

POLL-ETTES AWARD

The California Poll-Ettes, Inc. Women's Auxiliary of the California Polled Hereford Association 7775 Old Plymouth-Sacramento Road, Plymouth, California 95669 will award one trophy to the JUNIOR EXHIBITOR showing the most outstanding POLLED HEREFORD BREEDING ANIMAL. Juniors competing must show a POLLED HEREFORD that is naturally smooth headed, or having loose scurs, fitting the American Hereford Assoc. guidelines. Breeding animals, either a Bull or Heifer, must be registered with the American Hereford Association. In a mixed breeding show, no Polled Hereford placing below 4th place in the show is eligible for this award. Selection will be made by the official Judge of the Jr. Show, and the worthiness of the exhibit for such an award shall be the sole decision of the Judge.

WESTERN STATES ANGUS AUXILIARY AWARD

The Western States Angus Auxiliary, 1470 Eureka Lane, Templeton, CA 93465, will present an award to the outstanding 4-H Angus exhibitor and/or the outstanding FFA Angus exhibitor. The judge of the junior beef show will be asked to make the selection of the winner based on show ring placing of individual animals and placing in showmanship. The following point system must be followed: Conformation placing: Grand Champion, 40 points: Reserve Champion, 30 points: 1st place, 20 points: 2nd place, 15 points: 3rd place, 10 points: Participated in showmanship, 6 points: 25 points for an educational display promoting the Angus Breed. If steers & breeding animals are both exhibited, points may be combined to select a winner. For breeding animals, the animal must be registered with papers. This is open to exhibitors with one or more breeding and/or market animals. Winning the award in previous years shall not exclude an exhibitor from winning again. For market steers this award should go to the highest placing predominately black steer, the sire must be Angus. Champion 40 points: Reserve Champion 30 points.

It must be kept in mind that the purpose of this award is the promotion of the Angus breed; therefore Angus Breeding animals should take precedence over Market animals.

COW BELL AWARD

The Amador – El Dorado – Sacramento County Cow Belles Trophies are to be awarded to the highest placing 4-H/Grange member in Beef Showmanship, who has not previously won the Cow Belle Trophy.

CALIFORNIA - NEVADA HEREFORD WOMEN

The California-Nevada Hereford Women will present an award to the outstanding California Junior Hereford Member exhibitor. The selection of the winner is to be based on show ring placing of the individual animals, placing in showmanship, and their cooperation with the fair management. This is open to exhibitors with one or more breeding and/or market animals. It must be kept in mind that the purpose of this award is the promotion of the HORNED Hereford breed. Double registered Polled Herefords (Herefords with registration numbers starting with a "P") are INELIGIBLE for the award.

This award is to be presented to the highest point winner, exhibiting Horned Herefords, using the following scoring system:

The CA-Nevada Hereford Women's Award Scoring System

SHOWMANSHIP CLASSES: 1st - 8 points 2nd - 7 points 3rd - 6 points 4th - 5 points 5th - 4 points 6th - 3 points 7th - 2 points 8th - 1 point	BREEDING AND/OR MARKET CLASSES: 1st - 5 points, 2nd - 4 points 3rd - 3 points 4th - 2 points 5th - 1 point Champion - 5 points Res. Champ. - 2points Group 1 - 3 points Group 2 - 2 points Group 3 - 1 point
--	---

ROUND ROBIN: 3 Points

**PLEASE DON'T FORGET TO
THANK YOUR SPONSORS!!!**

~ Anything other than straw or shavings is prohibited for livestock bedding. ~

**1st Bedding Sponsored By
The Feed Barn**

BREEDING SHEEP

FORMS & FEES DUE BY: Tuesday, July 6, 6 pm
Entries In Place By: Tuesday, July 27, by 3 pm
Entries Judged: Friday, July 30, 12 Noon
Entries Released: Sunday, August 1, 6 pm



American System of Judging
 Local Classes - Open to members of 4-H, Grange Clubs,
 FFA Chapters & Independents in Amador & Calaveras
 Counties

REGISTERED PUREBRED BREEDING ANIMALS

Entry Fee: \$1.50 per entry
 Premiums offered per class

1 st	2 nd	3 rd	4 th	5 th	6 th
\$11.00	\$9.00	\$6.50	\$4.50	\$3.50	\$2.00

BREEDING SHEEP RULES:

- A. Flock numbers shall be used to identify all entries. Numbers shall be on regular and practical tags attached to the ear or tattooed in the ear.
- B. An exhibitor may not use the same flock number on more than one animal during any two consecutive calendar years. Registration numbers may not be used as flock number. Flock numbers and breeder's initials, name or association prefix shall be on regular and practical tags attached to the ear or tattooed in the ear for yearlings and lambs bred by exhibitor.
- C. Lambs must show lambs teeth.

DIVISION 91 – 4-H, GRANGE & FFA ALL BREEDS – RAMS

<u>Class</u>	<u>Date of Lambing</u>
1. Yearling	Sept. 2008- Aug. 2009
2. Lamb	Sept. 2009 - April 2010

CHAMPION RAM
sponsored by The Garbarini Family LLC-Tom, Don,
 Jan, Suzy Open

RESERVE CHAMPION RAM
sponsored by Open

DIVISION 92 – 4-H, GRANGE & FFA ALL BREEDS – EWES

<u>Class</u>	<u>Date of Lambing</u>
3. Yearling	Sept. 2008 - Aug. 2009
4. Lamb	Sept. 2009 - April 2010

CHAMPION EWE
sponsored by Plymouth Hardware & Feed

RESERVE CHAMPION EWE
sponsored by Cassie Ding

BREEDING SHEEP Continued on next page

BREEDING SHEEP Continued

RANGE SHEEP BY PUREBRED SIRE

Grade crossbred and unregistered purebred range sheep to be judged strictly on a range sheep basis. A permanent ear tag or tattoo number is required. Animals that have been registered by a purebred breed association cannot be entered in this division. By his signature as the owner or agent on an entry form, the exhibitor also certifies that the sire of each animal, entered in the following divisions for grade animals, was either registered or purebred.

Entry Fee: \$1.50 per entry			
Premiums offered per class			
1 st	2 nd	3 rd	4 th
\$7.50	\$6.00	\$4.50	\$3.00

**DIVISION 93 – 4-H, GRANGE & FFA
ALL BREEDS – EWES**

Class	Date of Lambing
5. Yearling	Sept. 2080 – Aug. 2009
6. Lamb	Sept. 2009 – April 2010
7. Five ewe lambs	Sept. 2009 – April 2010

CHAMPION RANGE EWE
sponsored by Dal Porto Excavating
RESERVE CHAMPION RANGE EWE
sponsored by Littlefield Ranch

SINGLE FEEDER ANIMALS – SHEEP

Danish System of Judging
All breeds judged together

Entry Fee: \$1.50 per entry	
Premiums offered per class	
1st Group - Fancy	\$3.00
2nd Group - Choice	\$2.00
3rd Group - Good	\$1.00
4th Group - Medium or Common - No Premium	

**DIVISION 94 – 4-H, GRANGE & FFA
ALL BREEDS**

Class	Weight
8. Feeder Lambs	99 lbs. & Under

CHAMPION AWARD
sponsored by Open
RESERVE CHAMPION AWARD
sponsored by Open

**PLEASE DON'T FORGET TO
THANK YOUR SPONSORS!!!**

**1st Bedding Sponsored By
The Feed Barn**

MARKET SHEEP



Danish System of Judging
All Breeds Judged Together

MARKET LAMB SCORECARD

MARKETABLE PLUS: USDA Prime or Choice quality in grade; having superior and above average conformation and cutability. Yield Grade 1 or 2, with at least 0.1 inch of fat cover. (PURPLE ribbon)

MARKETABLE: USDA Prime or Choice in quality grade, average conformation and cutability. Yield Grade 1, 2 or 3. (BLUE ribbon)

NON-MARKETABLE: Good or lower quality grade with 12th rib back fat range < .16 or > .35, under finished lambs grading USDA good or lower, below average conformation or cutability. Yield 4 or 5. (RED ribbon) Any lambs not making sale, may be released from fairgrounds the day they were shown, after 5:00 p.m. You **MUST** first obtain a livestock release form from livestock superintendent.

RULES:

A. All market sheep must be individually owned by the exhibitor for 60 days prior to the opening of fair. After weighing, market lambs may be divided into weight lots within 100 to maximum limitations as desired for convenience in judging.

B. Top weight limitations for the Auction is 140 lbs. Animals exceeding this weight will be sold at top limitations for 4-H, Grange, FFA and Independent.

C. Animals entered in weight divisions must arrive on grounds in time to be weighed in on Tues. July 27, at 3:00 P.M.

D. All market lambs must have been slick shorn from the knee and hock up. The fleece should not exceed 1/4" in length and fleece length must be uniform over the entire body. Lambs with excessive wool will not be weighed until shorn to meet the satisfaction of Fair Officials.

MARKET SHEEP

No premiums offered
Entry Fee: \$1.50 per entry

DIVISION 95 – 4-H/GRANGE ALL BREEDS

Class	Weight
9. Wether or Ewe Lamb	100 to no maximum

CHAMPION BUCKLE
*sponsored by The Feed Barn –
John & Susan Manning*
CHAMPION AWARD
sponsored by Bank of Amador
RESERVE CHAMPION AWARD
sponsored by Frank and Cindy Moreno
RESERVE CHAMPION BUCKLE
sponsored by Ed & Polly Fulton

MARKET SHEEP Continued on next page

MARKET SHEEP Continued

DIVISION 96 – FFA/GRANGE ALL BREEDS

Class 10. Wether or Ewe Lambs Weight 100 to no maximum

CHAMPION AWARD
sponsored by Open

CHAMPION BUCKLE
sponsored by Mills Plumbing, Calaveras Co. & Sullivan's Club Lambs

RESERVE CHAMPION AWARD
sponsored by Open
RESERVE CHAMPION BUCKLE
sponsored by Open

**AMADOR COUNTY
LOCALLY PRODUCED
MARKET SHEEP**

Classes are open to all Amador County sheep junior exhibitors who are exhibiting market animals. The dam must have been owned by an Amador County resident and was maintained in Amador County at the time of the project animal's birth.

NOTE: A form must be submitted with the fair entry in order to be eligible for this class. Forms are available at the Fair's Entry Office.

DIVISION 97 – LOCALLY PRODUCED MARKET ANIMAL - SHEEP

Class
1. 4-H/Grange/Independent

BEST LOCAL BRED
Award - *sponsored by Joe Lewis*

2. FFA/Grange/Independent

BEST LOCAL BRED
Award - *sponsored by Sweets Septic System, Inc.*

~ Anything other than straw or shavings is prohibited for livestock bedding. ~

**1st Bedding Sponsored By
The Feed Barn**

**PLEASE DON'T FORGET TO
THANK YOUR SPONSORS!!!**

LAMB RATE OF GAIN

LAMB RATE OF GAIN CONTEST

No Pre-Entry Required
Premiums Offered
1st 2nd 3rd
\$20 \$15 \$10

DIVISION 98 – LAMB RATE OF GAIN

Class
11. Lamb Rate of Gain
4-H/GRANGE AWARD
sponsored by Chet & Theresa Chapin - In Memory of Patricia Chapin
FFA/ GRANGE AWARD
sponsored by Karen Dutschke and Children
Trophy (if sponsored) and premiums will be awarded to 4-H/ Grange and FFA/Grange winners.

Lamb Rate of Gain Contest. Rules:

- A. Any lamb eligible for sale at Auction at the Fair is eligible for the contest.
- B. The animal must be weighed at lamb weigh-in day, which is approximately 60 days prior to the Auction. This weight will be the weigh-in weight for the contest.
- C. The weight of the lamb at the fair will be used as the out weight.
- D. Calculation: Net gain divided by number of days between pre weigh in and the fair weigh in equals rate of gain.
- E. The 4-H/Grange member and the FFA/Grange member with the highest rate of gain per day will be named the winners.
- F. The results will be announced after the Champion is announced.

**LAMB CARCASS
CONTEST**

LAMB CARCASS CONTEST

No Pre-Entry Required
Judging sponsored by Gold Nugget 4-H

DIVISION 99 – LAMB CARCASS CONTEST

Class
12. Lamb Carcass Contest

HIGHEST PLACING 4-H/GRANGE AWARD
sponsored by Ed & Polly Fulton

HIGHEST PLACING FFA/GRANGE AWARD
sponsored by Open

PREMIUMS
sponsored by Open

1st - \$40 2nd - \$30 3rd - \$20
Premiums to be awarded to the overall winners

All the carcasses of all sale animals sold at the Amador Co. Fair Jr. Livestock Auction are automatically entered in the Carcass Contest

LADS & LASSIES LEAD

FORMS & FEES DUE BY: Tuesday, July 6, 6 pm
Entries In Place By: Friday, July 30, by 12 noon
Entries Judged: Thursday 8 pm. in Livestock Arena

The purpose of the Lead Class is to promote the use of wool and acquaint the public with modern Sheep production. Entry blank must be submitted at the time of Livestock entries.

RULES & REGULATIONS:

- A. Sheep must be a wether or ewe lamb, or yearling ewe owned and exhibited by contestants during the Amador County Fair 4-H, Grange, FFA & Independents in a market or breeding class.
- B. Entrants must furnish own costume of wool or wool blend.
- C. Sheep must be shown at halter.
- D. ALL GROOMING & PREPARATION MUST BE DONE BY THE EXHIBITOR.

LEAD CLASS SCORE CARD

- 1. Contestant - 40 points
 - A. 15 points for costume. Fit of garment, appeal, appropriate for occasion.
 - B. 15 points if exhibitor makes costume.
 - C. 10 points for poise, ability to model garments.
- 2. Animal - 30 points
 - A. 20 points for fitting, condition of fleece, cleanliness, and groomed according to prevailing breed fashion.
 - B. 10 points for knowledge of sheep.
- 3. Showmanship - 30 points.
 - A. 15 points for animal trained to show at halter.
 - B. 15 points for ability to move animal as directed by judge.

Entry Fee: \$.50 per entry
No Premiums - Ribbons Only - 1st thru 5th place

1ST PLACE JUNIOR & SENIOR AWARDS
sponsored by Dwight & Ann Dutschke

DIVISION 100 – LAD & LASSIES LEAD CLASS

Class

- 1. Juniors: 13 Years of age & under on show day.
- 2. Seniors: 14 Years of age or older on show day.

WOOL & MOHAIR

FORMS & FEES DUE BY: Tuesday, July 6, 6 pm
Entries In Place By: Tuesday, July 27, by 3 pm
Entries Judged: Friday, after Breeding Sheep
Entries Released: Sunday, August 1, 6 pm

AMERICAN SYSTEM OF JUDGING
Local Classes - Open to Members of 4-H, Grange,
FFA & Independents of Amador County

FOR CALIFORNIA PRODUCTS ONLY

- A. Only complete Fleece in the grease is eligible for competition. Manufacturers and dealers are excluded.
- B. Fleece shall not be more than 12 months growth. The definition of "12 months" shall be the definition commonly accepted by the wool trade. Thus if a fleece is actually slightly more than 12 months growth due to unavoidable delay in obtaining shearers, or by weather, it shall be termed "12 months" wool.
- C. No wether fleeces may be included.
- D. Each exhibitor will be limited to two fleece entries in one class, except for the group class.
- E. All fleeces entered must have been sheared from sheep or goat owned by the exhibitor.
- F. The Judge has power to classify fleeces before making awards.
- G. Fleeces shall be tied with paper fleece twine, flesh side out, in a manner to allow handling without it falling apart.

WOOL & MOHAIR

Entry Fee: \$.50 per class
Premiums offered per class

1st	2nd	3rd
\$4.50	\$3	\$1.50

DIVISION 101 – BREED CLASIFICATIONS 4-H, GRANGE & FFA PUREBRED FLEECE

Class (Purebred Sheep Only)

- 1. Purebred Sheep Only
(Name of breed must appear on entry form)

DIVISION 102 – MARKET CLASSIFICATIONS 4-H, GRANGE, & FFA GRADE FLEECE *sponsored by Del Oro Spinners & Weavers Guild*

Class (Fleece from Grade or Crossbred Sheep Only)

- 2. 11-13 Month's Fleeces, Market Grade's
- 3. ½ or 3/8 Blood, strictly combing
- 4. ¼ Blood or low ¼ blood

DIVISION 103 – 4-H, GRANGE & FFA NATURE'S COLOR IN WOOL – NATURAL COLORED WOOL

Class

- 5. Grade (Fleece from Grade or Crossbred Sheep Only) 11-13 month's Fleeces
- 6. Registered, Kid Hair
- 7. Registered, Yearling Hair
- 8. Registered, Adult Hair
- 9. Grade, Adult Hair

DIVISION 104 – 4-H, GRANGE & FFA – MOHAIR

Class

- 10. Registered, Kid Hair
- 11. Registered, Yearling Hair
- 12. Registered, Adult Hair
- 13. Grade, Adult Hair